

**SPECIFICATION**

Stainless Steel AISI 304 **NI**  
matte **MT**

**FEATURES AND APPLICATIONS**

Plates for jointed hinges GN 7247.4 are designed with appropriate dimensions as accessories for jointed hinges GN 7241 (see page -), GN 7243 (see page -) and the GN 7247 (see page -).

The Stainless Steel-Plates are fastened from the outside via through-holes in the housing wall or alternatively by welding to the inside of the wall. This results in effective protection against vandalism, and the outsides of the housing remain free of attachments that do not match the design or that should be avoided entirely in the interests of easy cleaning.

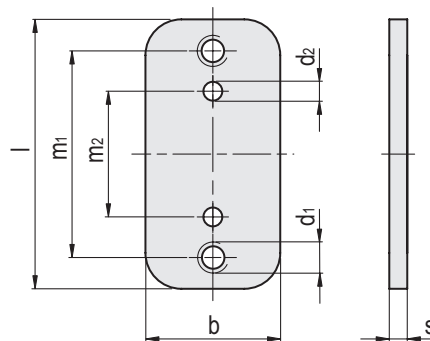
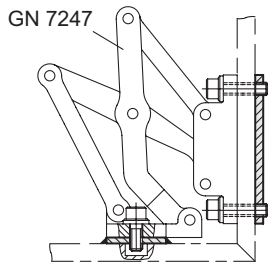
They make threaded holes, nuts and washers unnecessary during installation. This eliminates the labor-intensive pre-installation of such parts as well as the need to hold them in place during tightening or loosening. The plate thickness *s* corresponds to the minimum screw-in depth of thread *d1*, which should be fully achieved.

The holes *d2* receive tensioning or positioning pins, if necessary, making it easy to position the plates and the multiple-joint hinges.



**ON REQUEST**

- other plate sizes
- other plate geometries



Conversion Table	
1 mm = 0.039 inch	
mm	inch
60	2.34
75	2.93

Code	Description	l	d1	d2	b	m1	m2	s	⚖
GN.72447	GN 7247.4-NI-60-MT	60	M 6	4	30	46	28	4	52
GN.72448	GN 7247.4-NI-75-MT	75	M 6	4	30	61	40	4	66